



Next Steps/ Responding to offers

**Kat - School and
College Engagement
Officer**



University
of Exeter

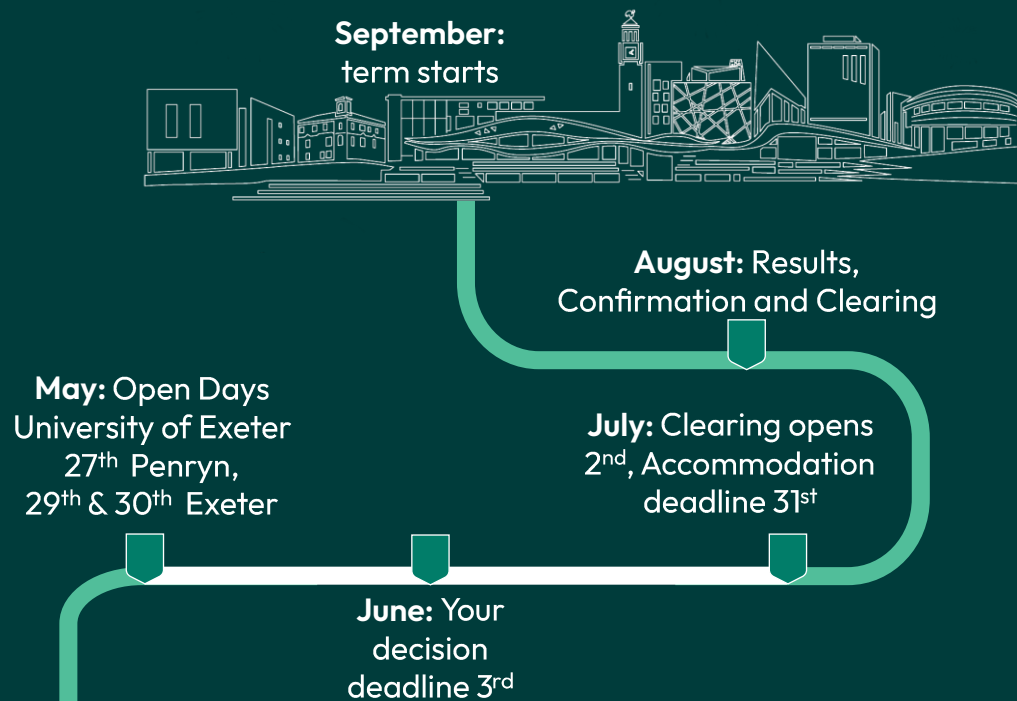
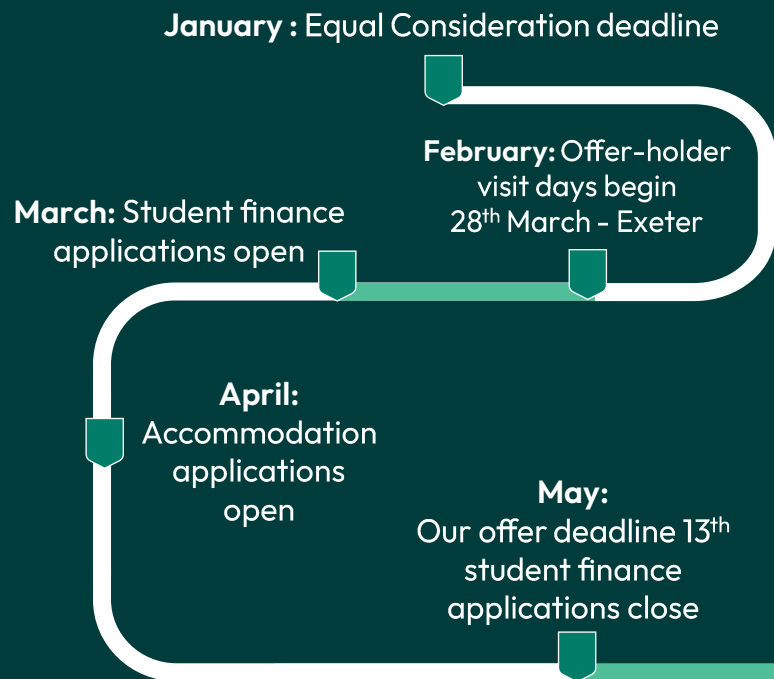


Today we'll explore

- How do you respond to offers?
- How do you make your choice?
- What happens on results day?



Your journey



What are the two main costs associated with university?

- Tuition fees
- Living expenses

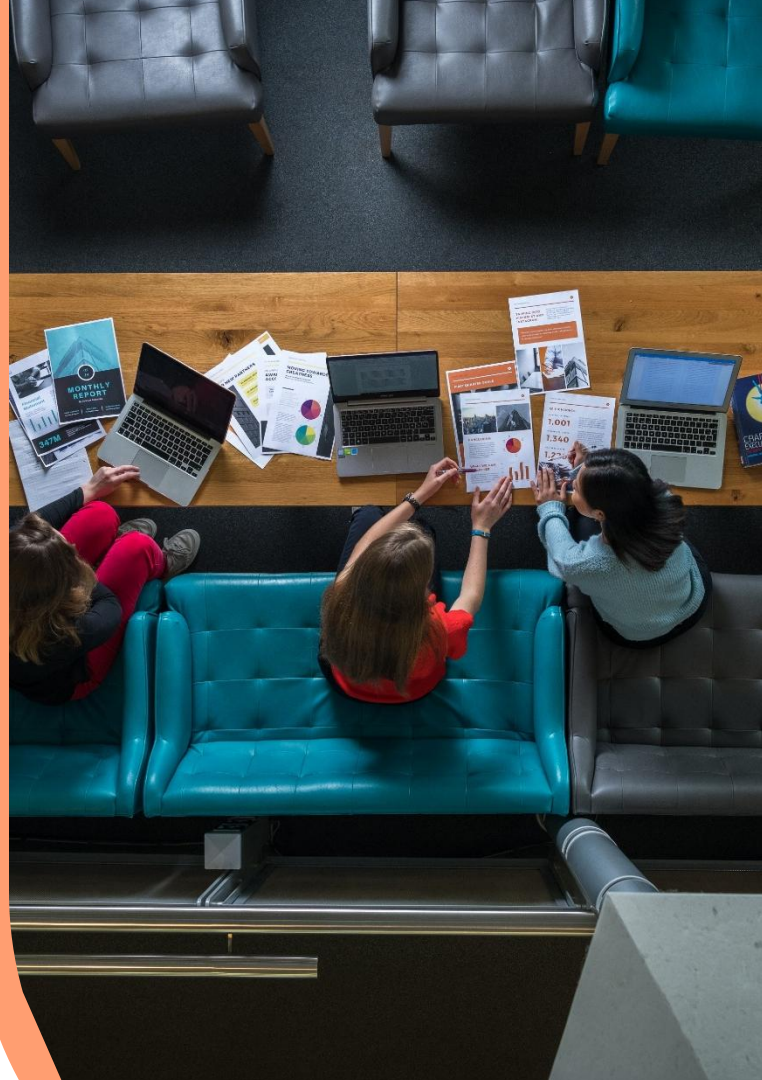


Tuition Fees 2026/27 entry

- £7,335 - £9,790 per year

Exceptions:

- BMBS Medicine (5th Year),
 - A year abroad (15%), or a year in industry (20%)
 - Degree Apprenticeships
-
- Fees don't need to be paid up front



Student living costs

Accommodation

Books and equipment

Food and drink

Clubs, societies and sports

Clothes, toiletries and haircuts

TV/music subscriptions

Travel home

Phone and internet

Social life

House deposit



Student living costs (per Academic year)

Self-catered accommodation (40 weeks)	£6,589.80
Socialising	£1268.40
Entertainment, going out, travel, food	£999.60
Supermarket spend	£1761.12
Clothing and fashion	£1479.60
Household bills	£1488.96
Total	£13,587.48



Accommodation cost based on University of Exeter average (Exeter campuses), Sept 2025. Other costs based on the Natwest Student Living Index, August 2025.



Sources of income: Government Loans (26/27)

Type of funding	Amount (per year)	Repayable	Non-repayable	Means-tested	Non-means-tested
Tuition fee loan	Up to £9,790	✓			✓
Maintenance Loan	Up to £10,830*	✓		✓	

*If living away from home at the University of Exeter (or another university outside of London).

Amounts differ for those living at home or studying in London.



Maintenance Loan

- To support students' living costs.
- The loan is paid directly into the student's bank account at the start of each term.
- The loan assumes students are studying for 31 weeks per year (not how you are funding for the rest of the year).
- The government also assume this is for basic living costs (not fun!)

Different for everyone



What counts as household income?



Combined parental income if student lives with both.



Father's income if student lives with Dad.



Mother's income if student lives with Mum.



Dad and step-parent or new partner if living with student.



Mum and step-parent or new partner if living with student.



Partner's income if student is married or aged 25+ and living with partner.

Maintenance loan and household income (26/27)

Household income	Living at home while studying	Living away from home while studying*	Living and studying in London
£25,000 or less	£9,118	£10,830	£14,135
£35,000	£7,589	£9,285	£12,563
£45,000	£6,060	£7,739	£10,991
£55,000	£4,531	£6,194	£9,419
£65,000	£4,013	£5,048	£7,846

*If living away from home at the University of Exeter (or another university outside of London).



Maintenance loan practicalities

- The government student finance webpages include a student finance calculator
- Assessment is based on the previous tax year, so for 2026 entry SFE will look at 2024/25 earnings
- You'll be asked for NI number and other evidence of income as well as identification
- Need to confirm details every year of your course



Check how much student finance you could get

This calculator is for students living in England starting a new undergraduate funded course in academic years:

- 2025 to 2026
- 2026 to 2027

Student finance is changing. If your course starts on or after 1 January 2027, [find out what you could get](#).

There's a different way to check how much you can get if you're [a student from Scotland](#), [a student from Wales](#) or [a student from Northern Ireland](#).

Use this calculator to estimate the amount you could get in:

- Tuition Fee Loans to help pay your course tuition fees
- Maintenance Loans to help with your living costs
- extra funding, for example if you're on a low income, are disabled, have children or are studying a certain course

www.gov.uk/student-finance-calculator

Paying back your government loans

Annual salary	Total monthly repayment
£25,000 or less	£0
£28,000	£22
£31,000	£45
£33,000	£60
£35,000	£75
£45,000	£150



After 40 years the balance of the loan is written off.



How and when to apply for financial support

- Student loan applications are now open (No need to wait for a confirmed place!)
- The deadline is Friday 15th May 2026.
- Apply online through Student Finance England



How and when to apply for financial support

- Student loan applications are now open (No need to wait for a confirmed place!)
- The deadline is Friday 15th May 2026.
- Apply online through Student Finance England



After applying

Track your applications and deadlines through your UCAS Hub using your UCAS Personal ID.

University decisions:

- Unconditional offer
- Conditional offer
- Unsuccessful or withdrawn
- Alternative offers

Most Students receive Conditional offers-
with a minimum target



- UCAS Extra – **add further course choices** if you **don't have any offers** from your original choices. (Open 26th Feb to 01st Jul)

You can check which courses have vacancies using the UCAS search tool but also check directly with universities. You can apply to **one course at a time**. If you don't hear back within 21 days, you can make a different Extra choice, or you can wait longer. (Universities must reply by 15 July 2026).

- To change your course or defer, contact the relevant University Admissions Team via email. (ug-admissions@exeter.ac.uk)



Things to consider when responding to offers:

1. Entry requirements
2. Course modules
3. Rankings and league tables
4. Distance from your home to university
5. How the University makes you feel
 - Attend Open days



Entry Requirements

Firm and **Insurance** choices

- Are the grades attainable and what is your backup?
- Talk to your teachers
- How will you motivate yourself?



Extenuating Circumstances

- Problems or barriers with your exams
(e.g illness, bereavement, late diagnosed disability, caring responsibilities)
- Contact the University ASAP – extenuating circumstances form (31st July)
- Don't wait until results day!



What makes this course stand out from other offers?

Opportunities:

- Study abroad?
- Year in industry?
- Extra-curricular opportunities?

Graduate outcomes:

What do students from this course go on to do after university?



Course modules

What will you be taught?

How much choice do you have over modules?

First Year History BA at Streatham

Compulsory modules

Single Honours students must take at least 15 credits (and up to a maximum of 30 credits) of Sources and Skills modules at Stage 1. 'Sources and skills' modules change yearly, depending on staff availability and other factors.

Code	Module	Credits
HIH1137	Becoming a Historian: Core	15
HIH1421	Understanding Medieval and Early Modern History	30
HIH1422	Understanding Modern History	30



Optional modules

Single Honours students must take at least 15 credits (and up to a maximum of 30 credits) of Sources and Skills modules at Stage 1. 'Sources and skills' modules change yearly, depending on staff availability and other factors.

You are strongly encouraged to take at least 15 credits (and up to a maximum of 30 credits) of modules outside History in Stage 1 via modularity.

Single honours students may take as one of their options HIH1139 Becoming a Historian (Extension)

Code	Module	Credits
HIH1139	Becoming a Historian: Extended	15

History Stage 1 Option modules 2024-5

HIH1402	Britain, America, and the Global Order, 1846-1946	JFK
HIH1618	Body, Border, Partition: Understanding Violence in South Asia	Losing an Empire, Finding a Role: Britain Since 1945
HIH1140	Confinement, Care, Cure: Psychiatric Institutions in the Twentieth Century	Murder in Early Modern England
HIH1412	Early Modern Magic and Witchcraft	From Wigan Pier to Piccadilly: Britain between the Wars
HIH1614	Environment and Industry, 1750-1950: Global Perspectives	The Viking Phenomenon
HIH1053	Gender and Sexuality in the Middle Ages	The First Day of the Somme
HIH1600	Images of Stalinism	The History of Strategic Thinking
HIH1585	Ladies of the Night: Prostitution in the Victorian World	The Good War? The United States in World War II

Rankings and League Tables

- What matters most to you?
 - Subject specific rankings
 - Graduate employment rates
 - Student satisfaction
- Use trusted sources - Complete University Guide, Guardian University Guide, Times Higher Education and others
- Balance with other considerations



How does it make you feel?

Offer Holder Visit Days

- Contacted directly by your universities
- Academic insight and accommodation

28th March – Exeter

Open Days

- Aimed at Year 12 students (more general information)
- Campus tours, hear about courses and subjects, meet faculty staff and students

Wednesday 27 May 2026 – Penryn Campus, Cornwall

Friday 29 May 2026 – Exeter Campuses

Saturday 30 May 2026 – Exeter Campuses



What might you want to find out about?

Your course

- Modules
- Research
- Student experience
- Placement opportunities
- Facilities and resources
- USP

Other things...

- Support services
- Sports facilities
- Clubs and societies
- Accessibility
- Accommodation
- Bursaries and scholarships



How to prepare

- Sign up to mailing lists
- Search for events
[Search Virtual Open Days - Complete University Guide \(thecompleteuniversityguide.co.uk\)](https://www.thecompleteuniversityguide.co.uk)
- Shortlist and prioritise
- Book in advance
- Go with specific questions
- Keep an open mind!



Results Day- 13th August 2026

Log on to UCAS from 8am to view offers

- **Unconditional:** confirmed place (firm or insurance choice depending on grades).
- **Unsuccessful:** you haven't been accepted.
- **Unconditional Changed Course:** requirements haven't been met so the university has proposed an alternative course /campus
(May need to wait a few days while universities decide on this, must accept/decline within 5 days.)

If **no decisions** show, contact the University.

DON'T PANIC and go to school if you can.



What is clearing?

Clearing is just another way to apply to university.

It's how universities and colleges fill remaining places they have on their (over 30,000) courses and is an ideal way for you to find another course.

From **2nd July – 19th October 2026**, you can use Clearing if:

- you're not already holding an offer from a university or college (or none that you want to accept)
- you're applying after 30 June
- you didn't meet the conditions of your offers
- you've declined your firm place using the 'decline my place' button in your application
- There are available spaces on a course you want.



You are **automatically entered into UCAS Clearing** if you haven't met your conditional offers and **no place is confirmed**. (Open 'til 19th October but **act fast** as places fill quickly.)

Did better than expected?

You can decline your place and enter Clearing. (Get written offer first)

You **contact universities directly** and give your Clearing number and UCAS Personal ID (in your UCAS application).

Once you have the ideal offer, you add it as a Clearing Choice on your UCAS application. The university should then confirm this. You only have **one Clearing choice at a time**, but if the university doesn't confirm, you can add another choice.

Clearing Plus is an additional service from UCAS. They will **match you to courses you may be interested in**, based on the information on your form. If any of these matches intrigue you, you can mark your interest and the universities can contact you.



Calling Universities

- Be prepared and do your research
- Stay organised - take notes
- Be positive, enthusiastic - also calm and confident
- Get several offers
- Take some thinking time
- Accept the place that feels right for you
- Look after yourself!





It's ok to change your mind.

- Other courses?
- Different Universities?
- Retaking exams and reapplying next year?
- Apprenticeships?
- Jobs with School leaver programmes?
- Gap year?

Even if unsure, go through the process, get yourself a place.
You can withdraw or defer right up until the day of enrolment.

Consider your options in advance

Accommodation

Firm Choice?

- Applications open in spring
- Self-catered vs catered
- Accommodation guarantee
- Online moving in guides
- Arrival day slot

Insurance Choice?

- First come first served – act quickly
- Private accommodation options



Accommodation webpages

Use the filters below to see our range of accommodation for 2025-26. You can also view a [table of all accommodation options](#), or use the 2025-26 [Undergraduate](#) and [Postgraduate](#) tables to compare accommodation details, including rent prices, bed sizes, ratios of applications to residence, walking distances and contract lengths.

2024-25 accommodation details, including prices, can be found on the 2024-25 [Undergraduate](#) and [Postgraduate](#) tables.

Maybe consider....

If having your meals taken care of at an even better price sounds good, you can now apply to be in a shared room in catered residences. [Find out more >](#)

Weekly price range:

- £100 - £169.99
- £170 - £209.99
- £210 - £249.99
- £250 - £329.99

For:

- Undergraduates
- Postgraduates

Catering:

- Self-catered
- Catered

Room type:

- Standard
- En-suite
- Studio
- Couples

Location:

- On Streattham Campus
- Near St Luke's Campus
- Off Campus/ In the City

Clear Filters



Birks Grange Village *



Birks Grange Village *



Birks Grange Village *



Clifford House (approved)





Questions and reflections

Further support

- University websites
- www.ucas.com
- www.theuniguide.co.uk
- www.prospects.ac.uk
- Teachers and careers advisers



DISCOVER
UNIVERSITY



@DiscoverUniExe

exeter.ac.uk/discoveruniversity



University
of Exeter

RUSSELL
GROUP

