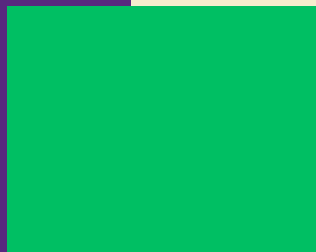




Electives Programme



**Terms 1 & 2
2025/2026**





Choosing an Elective

Here is a summary of the Electives available.

Electives fall into five categories- Creative, Giving Back, Sports, Student Led, and Study. A brief overview of each elective will be explained in the following pages of the booklet.

CREATIVE	GIVING BACK	SPORTS	STUDENT LED	STUDY
Dance & Choreography	Gold DofE	PE	Book Club	Access 2 Bristol
Leavers Yearbook	Lower School Subjecs		Culture Vulture	Core Maths
Prayer Room Grand Design	Portishead Youth Centre		Debate Society	EPQ
Set Design - 'Our House'	Primary School		Jazz Band	Fourth Subject
The Almost Legendary Film Club	Turn the Tide		Sixth Form Band	Further Maths
The Griffin	Work Experience			Study Skills



Creative: Dance and Choreography



A brand new elective this year where students will be under the supervision of Miss Holt to help plan and produce exciting dance choreography for the upcoming school production 'Our House' and to attend after school rehearsals once a week to team-teach the choreography to a handful of students.

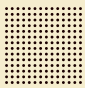
Lots of upbeat songs to choreograph too!

For more information about this exciting opportunity, please see Miss Holt.

LEAD: MISS HOLT
WHEN: WEDNESDAY WK 1 -P3 AND 4
WHERE: DA1
PLACES AVAILABLE: 10



Giving Back: Leavers Yearbook




Are you looking for a fun and creative way to contribute to this year's Year 13 Leavers programme?

The Yearbook Team is looking for volunteers to help organise, design, and create this year's unforgettable Yearbook!

If you are passionate about making sure no memory is left behind, we'd love to have you on board.

Let's make this Yearbook one to remember!

LEAD: MRS P HOLWELL
WHEN: FLEXIBLE TIMING
WHERE: GORDANO SCHOOL
PLACES AVAILABLE: 4



• • • •
• • • •

CREATIVE: Prayer Room Grand Design



Are you interested in undertaking a real-life interior design project from conception to completion; from blue-sky thinking to paint-on-hands practicalities?

The design brief is to overhaul the school's 'Prayer Room' to create an inviting, inspiring reflective space for students of all faiths and none.

This project would suit you if you want to develop your creative and project-management skills and are interested in engaging with a diverse user group and members of the senior leadership team (as the commissioning body). It may also suit you if you are interested in exploring faith or ways of expressing faith visually.

LEAD: MRS EASTWOOD-DEWING
WHEN: WEDNESDAY AFTERNOONS P5-6
PLACES AVAILABLE: 6

Creative: Set Design- 'Our House'



We're putting together a small creative team to help design and build the set for this year's school production of *Our House*, a vibrant, high-energy musical full of character, colour, and great music.

This is a fantastic opportunity to get hands-on with set design: sketching ideas, painting backdrops, building props, and working as part of a team to create a visual world that supports the story on stage. Whether you're studying Art, DT, or just love being creative, we'd love to have you involved.

No previous experience with theatre design is needed, just enthusiasm, reliability, and a willingness to get stuck in. It's a great way to be part of the show without being on stage, and something that looks brilliant on your portfolio or personal statement.

LEAD: MISS FAWCETT
WHEN: WEDNESDAY AFTERNOONS WEEK 2
WHERE: TBC
PLACES AVAILABLE: 5-10

Creative: THE ALMOST LEGENDARY SIXTH FORM FILM CLUB



From quirky cult classics to critically acclaimed but under-watched masterpieces, Film Club is about getting an eclectic education in the wonderful world of cinema.

Every two weeks, after school for an hour or so on a Tuesday, we watch a different film. Over the two sessions we chat about it, make links with other similar work (by genre, subject matter, directors, actors etc.) and choose the next film to watch. But mostly, we watch - and hopefully enjoy - really cool films.

All films must be feature length and have a BBFC certificate of 15 or lower. Horror, comedy, sci-fi, drama... From 1960s to last year, in both English and other languages, but all, hopefully, films that you won't have even heard of before.

Great for Media Studies students, but also for anyone who fancies spending a couple of hours every other Tuesday losing themselves in a fictional world (and the occasional documentary!)

*Don't do this option if you like to chat during films or have to look at your phone at the same time. Please do come along if you like eating popcorn or sweets while watching movies - but be prepared to share with me.

LEAD: MR TURNER

WHEN: TUESDAY 15.30 - 17.30 EVERY OTHER WEEK

WHERE: SF1

PLACES AVAILABLE: 20

Creative: The School Magazine **THE GRIFFIN**



Are you looking for a career as a future journalist?

Do you enjoy writing and editing new content?

Introducing THE GRIFFIN - the whole school magazine and newspaper.

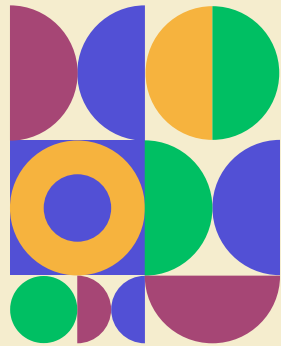
This elective will see you working closely as a team to produce a high quality magazine for the whole school to enjoy. The magazine is produced twice a year and is having a huge impact around the school.

This is a great insight into the world of print media!

EDITORIAL
team

LEAD: MR SWIFT
WHEN: WEDNESDAY AFTERNOONS
PLACES AVAILABLE: 10

Giving back: GOLD DUKE OF EDINBURGH



A life-changing experience. A fun time with friends. An opportunity to discover new interests and talents. A tool to develop essential skills for life and work. A recognised mark of achievement; respected by employers.

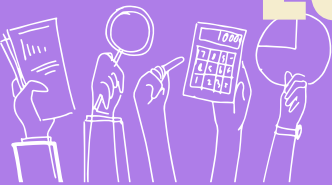
Gold DofE Award. Practice expedition takes place in Brecon Beacons (3 days, 2 nights), qualifying expedition takes place in Snowdonia (5 days, 4 nights). Elective time will be used to complete your volunteering, physical and skills section.

You can still sign up to Gold DofE if you choose to undertake a different elective.

LEAD: MISS OAKMAN
WHEN: AS DIRECTED BY MISS OAKMAN
PLACES AVAILABLE: UNLIMITED



Giving Back: LOWER SCHOOL SUBJECTS



Thinking of working and want to develop more skills?

Assisting with lower school lessons will provide you with a great opportunity to hone your communication and interpersonal abilities. Choosing a subject that you love and convey your passion whilst helping the younger years, guiding individuals on how to be a successful learner, is what lower school support is all about. If you are helping with lower school clubs, you can also use this as your Elective.

Please complete a pink form available in the Sixth Form office to let Mrs Holwell know when, where & with whom you will be working.

LEAD: VARIOUS
WHEN: WEDNESDAY AFTERNOONS OR FREE LESSIONS
PLACES AVAILABLE: UP TO 40

Giving Back: Portishead Youth & Community Centre



Portishead Youth & Community Centre are looking for hardworking individuals to help with our activities for senior citizens on Wednesday afternoons.

Support the delivery of our weekly activity session with individuals aged 55+ with activities such as arts and crafts, cooking, games and quizzes.

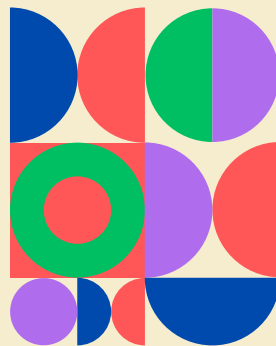
This volunteering opportunity would suit those with an interest in Health and Social Care or wanting to go into a medical profession.

This role will involve chatting to our senior citizens and helping them engage with the activities, and setting up and packing away resources and furniture after the session.

LEAD: AMANDA GALLAGHER AT PYC
WHEN: WEDNESDAY AFTERNOONS
PLACES AVAILABLE: 3



Giving Back: PRIMARY SCHOOLS



If your future might involve working with young people, what better way to spend Wednesday afternoons than working in a local primary school class?

Each year this is a very popular option, and primary schools really value the contribution of the young adult helpers. This is also an excellent way of demonstrating a career interest in childcare when applying to universities or colleges.



LEAD: PRIMARY SCHOOLS
WHEN: WEDNESDAY AFTERNOONS
PLACES AVAILABLE: 10

St Joseph's



Catholic Primary
School

St Peter's



Church of Engl.
Primary School



Giving Back: TURN THE TIDE



TURN THE TIDE

Be part of the community
striving for a
litter free Portishead!

Turn the tide is an amazing group of volunteers
that join in with litter picking in the local area.

If you would like to make the area around our
school and sixth form a litter-free zone, then this
is the elective for you.

LEAD: PENNY AT TURN THE TIDE
WHEN: WEDNESDAY AFTERNOONS
PLACES AVAILABLE: 10



Giving Back: WORK EXPERIENCE

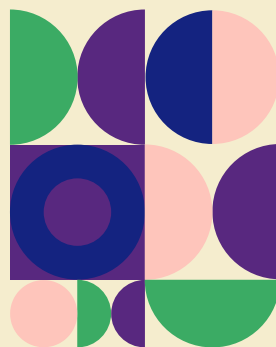


If you would like to organise a local work experience placement on a Wednesday afternoon or at a time agreed with your Head of Year, to gain experience in your particular area of career interest, the Careers Team will be happy to support you and guide through the Unifrog process.



LEAD: MRS GARDINER & MRS JONES
WHEN: WEDNESDAY AFTERNOONS

Sports: PE



This option will take the form of a recreational sports session where you will be given a choice of sports activities to take part in.

These will include all the major sports that you would have taken part in during your core PE Lessons.

The options will change each week to give you a variety of activities.

You will be expected to take part each week with appropriate sports kit (no denim!) and this PE session will be timetabled weekly in one of the double-period blocks below.

LEAD: GORDANO PE DEPARTMENT
WHEN: MONDAY P1/2, TUESDAY P1/2, THURSDAY P3/4
PLACES AVAILABLE: 20 PER TIMETABLED SESSION



Student-Led: BOOK CLUB



Looking for a way to dive into great books, have meaningful discussions and develop critical thinking skills?

Then Sixth Form Book Club is for you!

This is the perfect elective for longtime book lovers, new readers, and those who want to get back into reading.

Whether you're looking to lose yourself in a story or challenge your thinking, our Book Club is for you!

LEADS: MATILDA UPTON, SOPHIE TILKE, HALI SHAPCOTT

WHEN: WEDNESDAY LUNCHTIME

WHERE: TBC

PLACES AVAILABLE: 20



Student Led: CULTURE VULTURE



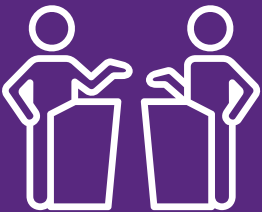
Have you enjoyed reading the Culture Vulture Magazine? Do you wish you could have your say? You are in luck – Culture Vulture is expanding!

If you enjoy watching films and reading books, scrolling TikTok and pestering your friends with the latest trends, listening to music and analysing podcasts, then this elective is for you. Established at the end of September 2022, the relatively new Sixth Form publication is looking for new voices and inputs. We want it to be a magazine shaped by Sixth Formers themselves.

Meeting on a Wednesday lunchtime, Culture Vulture will give you the opportunity to write new articles, design new pages and promote the content to the rest of the sixth form. We will also give you an insight into running a student publication, such as following deadlines and sticking to a style guide.

This elective will be a great opportunity for those of you who wish to explore a future in creative industries, such as marketing and journalism. It is also good experience to have if you are interested in joining a student paper society at university, or even just like writing about your favourite things!

LEAD: MEADOW OWEN & MABEL MILLS
GUIDANCE FROM MRS RAMSAY
WHEN: WEDNESDAY LUNCHTIMES
PLACES AVAILABLE: 5 - 10



Student-Led: DEBATE SOCIETY



Have a love for argument and want to apply your talent?

Keep up to date with the latest topics and news?

Want to learn how to think fast on your feet?

If the above sounds like you, join the student debate society, meeting weekly in the Sixth Form Hall.

This elective is a good option if you are thinking of studying PPE at university, want to join a future debate society or simply enjoy a bit of friendly confrontation!

LEADS: ETHAN HODGSON & ANDREAS WILAND

WHEN: WEDNESDAY LUNCHTIME

WHERE: SIXTH FORM HALL

PLACES AVAILABLE: 20



Student-Led: JAZZ BAND

Join the Jazz Band!

If you're passionate about jazz music, then the Jazz Band is the place for you! whether you're an experienced musician or just starting out, we'd love to have you join us.

We welcome any instrument- brass, woodwind, strings, percussion, or vocals- if you have a passion for jazz, you're already a perfect fit!



LEAD: VIOLET HANKS & JETHRO EVANS
WHEN: WEDNESDAY AFTERNOONS
WHERE: MUSIC BLOCK (ROOM TBC)
PLACES AVAILABLE: 30



Student-Led: SIXTH FORM BAND

Are you interested in playing your instrument as part of a band?

Want to join a fun and social group of other musicians?

Come along to Sixth Form Band on a Wednesday afternoon! All instrumentalists are welcome at all levels of ability, as we play many different genres and style of music so you will definitely find something you enjoy. Rehearsals will run throughout the term, ending with performances at the school concerts. This will look very good on your CV and is a great opportunity to improve your playing skills and overall musicianship.



LEAD: BEN TILKE
WHEN: WEDNESDAY AFTERNOONS
WHERE: MUSIC BLOCK (ROOM TBC)
PLACES AVAILABLE: 30



STUDY: ACCESS TO BRISTOL



The Access to Bristol scheme provides an opportunity to experience life at the University of Bristol and will give you access to its academic expertise and facilities.

Be ready to attend a series of sessions at the University one of fifteen subject streams.


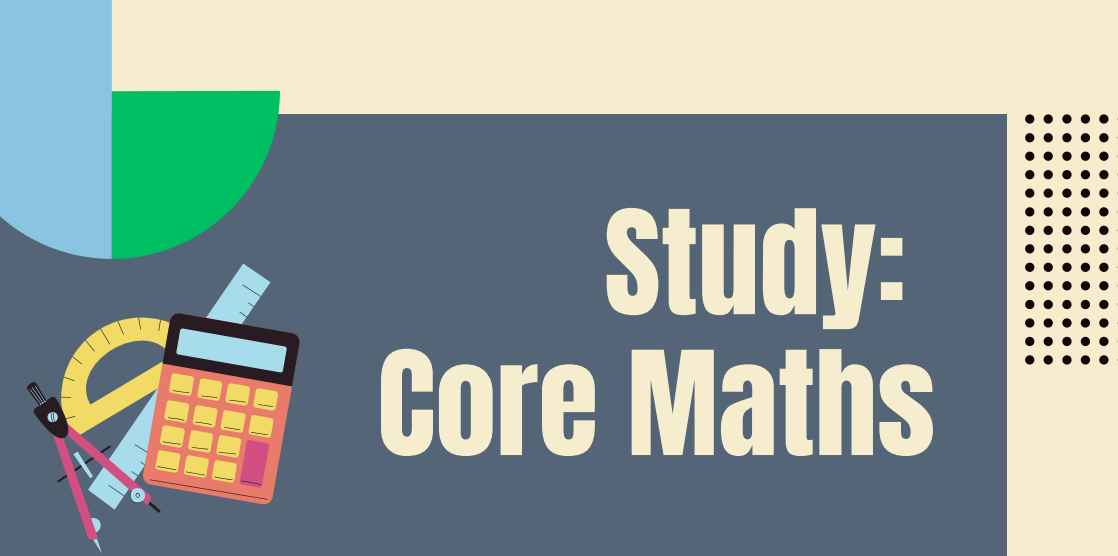
Lectures will show you what study is like at the University of Bristol. You will work with current Bristol students and academics who can advise on higher education if you choose to study further in this subject (you don't have to go to Bristol University though!)

Applications are submitted direct to the University

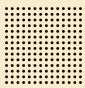
LEAD: MRS P HOLWELL
WHEN: AS DIRECTED BY UNIVERSITY OF BRISTOL
YEAR 12 & 13



University of
BRISTOL



Study: Core Maths



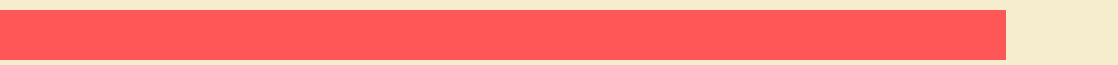
If you are taking Core Maths, you don't HAVE to choose an elective, HOWEVER, you can if you like!

Core Maths is a Level 3 qualification, taken alongside your other three subjects. The course is aimed at students who would benefit from studying Maths beyond GCSE but who haven't chosen to study A Level in Maths. The qualification is equivalent to an AS level and is grade A-E.

You will be able to use Wednesday afternoon to study and will also need to attend your Core Maths lessons.

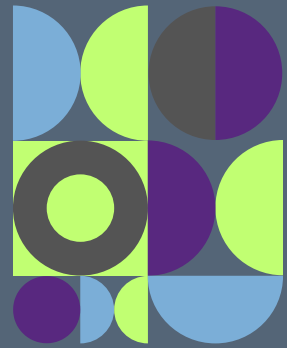
This elective is only for existing students studying Core Maths. Please select Core Maths on the Form.

LEAD: MRS P HOLWELL
WHEN: WEDNESDAY AFTERNOONS AND TIMETABLED STUDY
YEAR 12 ONLY





Study: EPQ



If you are taking an EPQ you don't HAVE to do an additional elective, HOWEVER, you can if you like!

The EPQ or Extended Project Qualification is a nationwide recognised qualification, which is equivalent to an AS and carries up to 70 UCAS points if an A* is achieved. This is an independent research project that universities recognised as an achievement to complete, and it can help to lower your entry requirements for further study.

The EPQ is completely independent, meaning you can write on any subject you desire. Taylor Swift lyrics, Quantum Computers and AI algorithms or even human rights issues in sports. The project allows you to research, prepare and present on a topic that interests you.

It can either be completed as a 5,000 word essay or you can do an artefact. This could be something you make - an item of clothing, a book or a working jet propelled model plane which is presented with an 1,000 word essay.

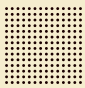
You will be able to use Wednesday afternoon to study, and will also need to attend meetings with your EPQ supervisor. Please select EPQ on the Form.

LEAD: MRS NASH
WHEN: WEDNESDAY AFTERNOONS AND TIMETABLED
STUDY
YEAR 12 ONLY





Study: FOURTH A-LEVEL



If you are taking 4 A-levels you don't HAVE to choose an elective, HOWEVER, you can if you like!

You will be able to use Wednesday afternoon to study for any of your four A-levels.

This elective is only for existing students studying 4 A-Levels.

Please select Fourth A Level Subject on the Form.

LEAD: MRS P HOLWELL
WHEN: WEDNESDAY AFTERNOONS





Study: Further Maths



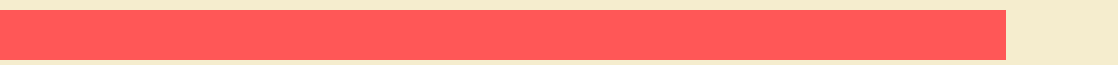
If you are taking FURTHER MATHS, you don't HAVE to choose an elective, HOWEVER, you can if you like!

You will be able to use Wednesday afternoon to study and will also need to attend your Further Maths lessons.

This elective is only for existing students studying Further Maths.

Please select Further Maths on the Form.

LEAD: MRS P HOLWELL
WHEN: WEDNESDAY AFTERNOONS AND TIMETABLED STUDY
YEAR 12 ONLY





Study: Study Skills

If you would like to use Wednesday afternoon as time for Silent Study in the Learning Curve, please choose 'Study Skills' as an elective.

This will be a quiet place and time for you to concentrate and develop your study skills.

**LEAD: MRS P HOLWELL
WHEN: WEDNESDAY AFTERNOONS**